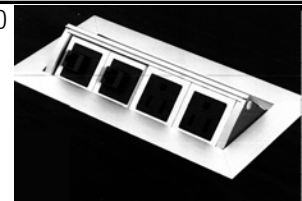


Cumberland's line of power/data modules is available for use in the Metros conference tables. A wide variety of data and communication modules are available to meet your specific power and data needs through a range of aesthetic and functional options. All of these solutions have appropriate wiring channels below the work surface. Wire routing and an access door will also be included in the table bases. These power and data wire management systems are some of the finest and best looking on the market. These units not only put data and electric hook-up right at your fingertips, they also allow you to change your data modules as your needs change. Each of these units (except 5006) can also be configured for hard wire installations.

Flush Mount and Under-Surface Modules

Model	Description	Dimensions	List
5002	Standard UL listed Power/Data unit MHO. It has a fluid one-touch single door that is open during use. It has, 2 simplex power and 2 voice/data ports and comes standard with a 15 amp 6' cord. This unit can be specially ordered for a hardwire application. Finish: Satin Aluminum or Matte Black	4.4375"w x 8.3125"d	1050



Model	Description	Dimensions	List
5003	Premium UL listed Power/Data unit MHO2. It is designed with one touch double doors that function as cable management portals that close while in use. It has, 3 simplex power and 4 voice/data ports and comes standard with a 15 amp 6' cord. This unit can be specially ordered for a hardwire application. Finish: Satin Aluminum or Matte Black	12.8215"w x 7.5625"d	1175



Model	Description	Dimensions	List
5004	The easy elegance of Node's clean, flush mount design is sure to complement a wide range of aesthetics. Available with a single simplex outlet and a 2amp USB duplex, ideal for charging two tablets and other USB-friendly electronics. Node is available in a 15 amp 6' cord. Finish: Satin Nickel or Matte Black	3"Dia	525



Model	Description	Dimensions	List
5005	Unit contains 2-grounded simplex outlets, 15-amp circuit, (2) R45 cat 6 Data jacks, (1) RJ11 cat 3-phone jack, (1)- 3.5 mm stereo jack and (1) 15-pin VGA connector. All units have convenience receptacles for daisy chaining of multiple units. The device has a 10' power cord as a standard, but can be hard wired as an option upon request at no upcharge. Finish: Polished, Satin and Statuary Bronze	6"Square	975



Retractable Pop-Up Power/Communications Modules

Model	Description	Dimensions	List
5009	Available as a manual push open/close or as a motorized open/close, this unit comes standard with 8 electric modules and 8 data modules. Finish: Veneer		Call

