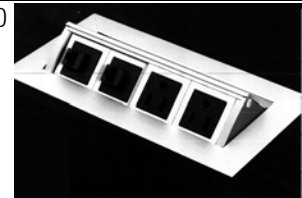


Cumberland’s line of power/data modules is available for use in the Metros conference tables. A wide variety of data and communication modules are available to meet your specific power and data needs through a range of aesthetic and functional options. All of these solutions have appropriate wiring channels below the work surface. Wire routing and an access door will also be included in the table bases. These power and data wire management systems are some of the finest and best looking on the market. These units not only put data and electric hook-up right at your fingertips, they also allow you to change your data modules as your needs change. Each of these units (except 5006) can also be configured for hard wire installations.

Flush Mount and Under-Surface Modules

| Model | Description | Dimensions | List |
|-------|---|---------------------|------|
| 5002 | Standard UL listed Power/Data unit MHO. It has a fluid one-touch single door that is open during use. It has, 2 simplex power and 2 voice/data ports and comes standard with a 15 amp 6' cord. This unit can be specially ordered for a hardwire application. Finish: Satin Aluminum or Matte Black | 4.4375"w x 8.3125"d | 1050 |



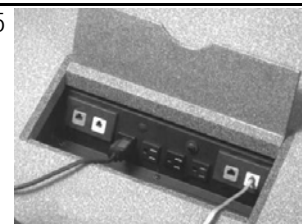
| Model | Description | Dimensions | List |
|-------|---|----------------------|------|
| 5003 | Premium UL listed Power/Data unit MHO2. It is designed with one touch double doors that function as cable management portals that close while in use. It has, 3 simplex power and 4 voice/data ports and comes standard with a 15 amp 6' cord. This unit can be specially ordered for a hardwire application. Finish: Satin Aluminum or Matte Black | 12.8215"w x 7.5625"d | 1175 |



| Model | Description | Dimensions | List |
|-------|---|------------|------|
| 5006 | Under surface or apron mounted with 3 electrical modules and 3 data module. 72" single circuit power cord and face plate. Finish: Black Matte Metal | 9"w x 2"d | 375 |



| Model | Description | Dimensions | List |
|-------|--|--------------|------|
| 5007 | Under surface mounted power and communications module with custom hinged access door flush with surface. Access door is standard with matching veneer panel but can also be specified in contrasting veneer or metal. Power and communications module includes 4 electric modules and 4 data modules. 72" single circuit power cord. Two circuit unit with isolated ground receptacles and hard wired is also available. Please contact Cumberland customer service for pricing and specifications. Note: Not available on stone top tables. | 13.5"w x 6"d | 1345 |



Retractable Pop-Up Power/Communications Modules

| Model | Description | Dimensions | List |
|-------|---|------------|------|
| 5009 | Available as a manual push open/close or as a motorized open/close, this unit comes standard with 8 electric modules and 8 data modules. Finish: Veneer | | Call |

