

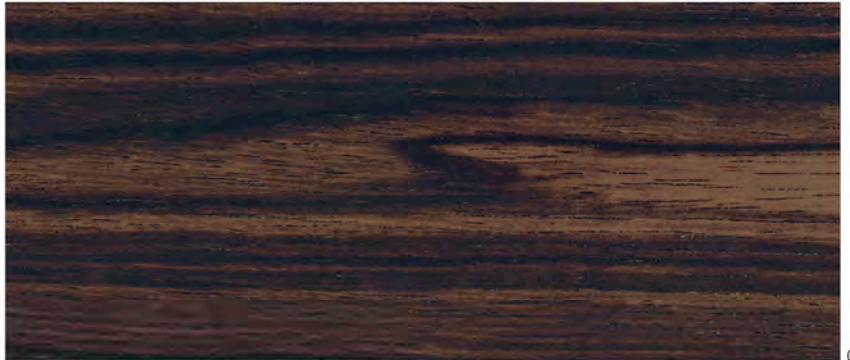
EAST COAST



GIVING VOICE TO UNIQUE CREATIVITY

Part of making beautiful objects that work is giving creativity a voice. With that goal in mind, we began our Designers Speak series as one way to give the originality of regional talent a means of expression. This national multiphase program allows design leaders across the States to create designs that speak to their regions and their own hearts, as well as to market preferences. Our intent is not to be trendy but rather to offer pieces that remain true to our mission of creating timeless classics.

We are pleased to present this first phase of Designers Speak. It reflects an East Coast influence in furniture designed by Jordan Goldstein and Shawn Littrell of Washington, D.C., Tim deFiebre of New York, and Gary Lee of New York and Chicago.



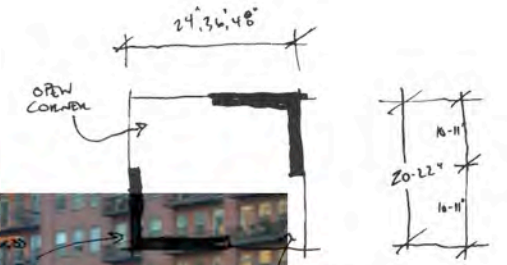
CRAFTED



CLASSIC



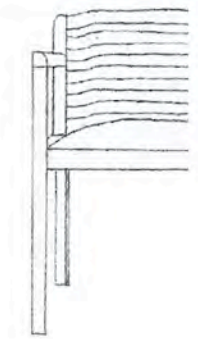
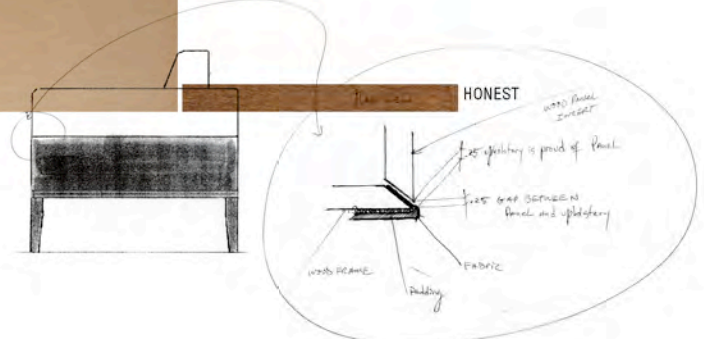
ENDURING



DESIGNERS SPEAK CUMBERLAND



TIMELESS



TIMOTHY deFIEBRE

When Timothy deFiebre designs, he's never far from a Broadway state of mind. Trained in theater set design, he shifted his interest to furniture design while working at the Julliard School. After stints at the Yale School of Drama and Parsons School of Design, deFiebre joined Brickel Associates. There, he became Director of Design and had a long and close association with Ward Bennett. Through his years directing design for the ICF Group and later establishing his own firm, deFiebre has continued to send roots deep into the New York landscape of design. His pieces for the Designers Speak series demonstrate his sensibility as it takes form in studied proportion and the use of materials to create interesting surface textures.



MUNICH CHAIR



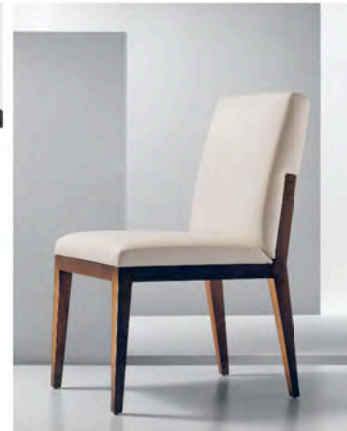
SCALA CHAIR



FLETCHER CHAIR

JORDAN GOLDSTEIN

A native Washingtonian, Jordan Goldstein developed an appreciation of grand buildings at an early age. So, it was natural that he studied to be an architect, with training here in the States as well as in Tokyo and Rome. And, it was just as understandable that he join the long tradition of architects who also design furniture. Citing the influences of mid-century modern design and the work of Mies and Corbusier, Goldstein says that he and Shawn Littrell, who assisted him in this project, wanted their Designers Speak pieces to reflect a few key principles: simplicity of form, clean lines, and an elegant blending of materials. Their goal was to make these pieces easy to appreciate visually and human scaled – great aspirations for furniture and buildings alike.



ALIA CHAIR



ALIA METAL LOUNGE



ALIA WOOD LOUNGE



ALIA WOOD BENCH



ALIA METAL BENCH

GARY LEE

Like so many Midwesterners before him and since, Gary Lee formed an early fascination with the coasts, in his case, the east coast. While today he does most of his interior design and furniture design from Chicago, his firm's New York office is his design "home away from home." His pieces for the Designers Speak series reflect both the edginess of the Big Apple and a practical, heartland sensibility. In fact, an interweaving approach marks all of Lee's work, with his interior designs inspiring his furniture and his furniture designs informing his interiors. Yet, as is apparent in his Designers Speak pieces, Lee's designs speak with one, eloquent voice.



FORTIS WALL-MOUNTED CREDENZA



FORTIS TABLE



FORTIS CREDENZA



FORTIS CONFERENCE TABLE



FORTIS LECTERN



FORTIS MOBILE CART



FORTIS VISUAL BOARD